

## SCRIBE 180X45 U SERVO

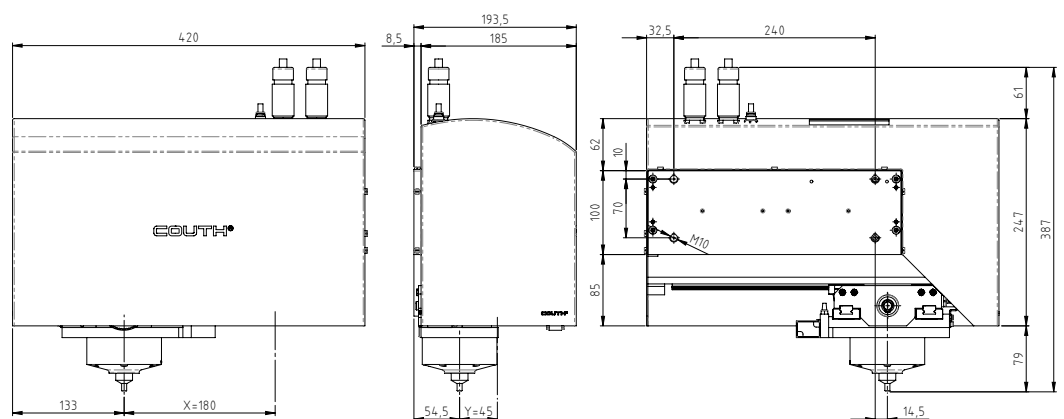
### INTEGRABLE · SCRIBE MARKING

- Scribe marking unit, **silent and powerful**, for **deep, quick marking**. Especially designed to be integrated into production lines, and marking for **pieces to be treated later** (blasting, machining, grinding, painting, etc.) and **VIN marking** in the automobile industry.



### ADVANTAGES

- **Silent**, improves comfort in the working environment and for the operator.
- **Very deep marking**, up to 0.5 mm.
- **High marking speed**, for all kinds of materials and hardnesses up to 62HRC.
- Great **reliability**, uninterrupted productions and lower maintenance costs.
- Highly **robust and long-lasting**, thanks to the high quality of its components.
- Mark verification with **encoders**.
- Circular connector that **facilitates assembly and disassembly**.



Area X x Y	Dimensions (mm)			Weight Kg	Depth Maximum
	Width	Depth	Height		
180 x 45	285	188.5	313.5	14	0.4 mm

### CHARACTERISTICS

- 180 x 45 mm marking area.
- Mark depth, up to 0.5 mm.
- Up to 6-bar air pressure.
- Speed up to 12 characters/second.
- Hardness of materials to mark up to 62HRC.
- Wide range of characters, from 0.1 mm to complete area.
- Marking alphanumeric codes, logotypes, DATAMATRIX™, QR codes, etc.
- R63 marking cylinder.
- Optional protection system with bellows.
- Built-in encoders to verify the mark.
- Circular connector that facilitates its maintenance.
- 2.5-meter robotics cable, with customisation possibilities.
- Connection with **COUTH SPECIAL SERVO** control units for integration in production lines (see technical file for more information).
- PC edition software.